

CARTER COUNTY

AGRICULTURE & NATURAL RESOURCES

NEWSLETTER



University of Kentucky  
College of Agriculture,  
Food and Environment  
Cooperative Extension Service

Carter County

94 Fairground Drive Grayson, KY 41143

Phone: (606) 474-6686 Fax: (606) 474-8542

[extension.ca.uky.edu](http://extension.ca.uky.edu)

## April 2023 Upcoming Events

\*Denotes events where preregistration is required. Call 474-6686 or email [Rebecca.k@uky.edu](mailto:Rebecca.k@uky.edu) to register.\*

- April 1 @ 9:00 AM      **\*Sheep & Goat Predator Control Workshop**—Extension Office & Knipp Farm\*
- April 3 @ 6:00 PM      **Woodland Threats & Comebacks**—Boyd County Franks Building
- April 4 @ 6:30 PM      **Little Sandy Beekeepers**—Extension Office
- April 6 @ 1:00 PM      **Hike & Learn**—Carter Caves State Resort Park
- April 6 @ 6:00 PM      **\*Farmer's Market Zoom—What's Bugging My Garden? - Online\***
- April 17 @ 4:00 PM      **Ag Advancement Council**—Extension Office
- April 18 @ 9:15 AM      **\*Eden Shale Farm Tour**—Meet at Extension Office\*
- April 21 @ 8:00 AM      **Soil Conservation Tree Giveaway**—Farmer's Market Shed
- April 25 @ 6:00 PM      **Northeast Area Livestock Association**—Extension Office
- May 1 @ 5:30 PM      **\*Regional Farmer's Market Meeting**—MSU Farm Classroom\*
- May 2 @ 6:30 PM      **Little Sandy Beekeepers**—Extension Office
- May 4 @ 1:00 PM      **Hike & Learn**—Laurel Gorge Cultural Heritage Center
- May 9 @ 10:00 AM      **Extension District Board Meeting**—Extension Office
- May 11 @ 12:00 PM      **\*Floral Care & Arranging Workshop**—Extension Office\*
- May 23 @ 6:00 PM      **Carter Co. Farmer's Market Organizational & Business Mtg.**— Ext. Office

Enjoy your newsletter,

Rebecca Konopka,  
Carter County Extension Agent for Agriculture & Natural Resources Education



**Cooperative Extension Service**  
Agriculture and Natural Resources  
Family and Consumer Sciences  
4-H Youth Development  
Community and Economic Development

Educational programs of Kentucky Cooperative Extension serve all people regardless of economic or social status and will not discriminate on the basis of race, color, ethnic origin, national origin, creed, religion, political belief, sex, sexual orientation, gender identity, gender expression, pregnancy, marital status, genetic information, age, veteran status, or physical or mental disability. University of Kentucky, Kentucky State University, U.S. Department of Agriculture, and Kentucky Counties, Cooperating.

LEXINGTON, KY 40546



Disabilities  
accommodated  
with prior notification.

## Little Sandy Beekeepers Association

**\*\* New Meeting Time — 6:30 PM\*\***

First Tuesday of the Month

**April 4<sup>th</sup> @ 6:30 PM**

Speaker: Caroline Kane

Topic: Viruses & Nutrition Supplements

**May 9<sup>th</sup> @ 6:30 PM**

Speaker: Kenny Holbrook, KSU Apiculture Research and Extension Assistant

Topic: KSU Bee Health Lab News



## Northeast Area Livestock Association

**April 25<sup>th</sup> @ 6:00 PM**

Speaker: Dr. Jimmy Henning

Topic: Repairing & Preventing Winter Sacrifice Areas

## Eden Shale Farm Tour

**April 18<sup>th</sup>**

Meet at the Extension Office at 9:15 AM.

Limited spots are available to ride in the Extension van. Please register by April 11<sup>th</sup>.



[www.FromTheWoodsToday.com](http://www.FromTheWoodsToday.com)

**Wednesdays  
11:00 AM**

April 5: Road Layout for Fire Lines, Planting Trees and Tree Ordinances

April 12: Bird ID, Tree of the Week, Steps to Stewardship

April 19: All Things Earthy (Earth Day Special), Wildlife ID

April 26: Benefits of Urban Reforestation, Wildlife Sounds

## REGIONAL FARMER'S MARKET MEETING

**Monday, May 1<sup>st</sup>**

Morehead State University Farm Classroom  
(Inside Horse Arena)

25 MSU Farm Drive—Morehead, KY 40351

Registration @ 5:30 PM \* \* Program @ 6:00 PM

**Topics & Activities:**

\*Updates from KY Department of Agriculture

\*Customer Retention and Engagement

\*Accepting More Than Just Cash

\*Display Booths from Local Businesses and Vendors

\*Preorder KY Proud Items from KDA and pick them up at the meeting to save on shipping.

Preregister by April 21<sup>st</sup>.

Scan the QR code or call your local Extension Office.

606-474-6686





**First Thursday of the Month**  
**April 6<sup>th</sup> @ 1:00 PM**  
**Carter Caves State Resort Park**  
**Natural Bridge Trail & Aquatic**  
**Insect Stream Stomp**

- \*Meet by the picnic table to the left of the welcome center.
- \*Bring your own snacks & drinks.
- \*Wear closed-toe shoes for the hike, but you may want extra shoes to change into after the stream stomp.
- \*During the stream stomp hikers will discover aquatic insects and how they relate to water quality.
- \*Distance: 3/4 mile


**Next Month's Hike: May 4<sup>th</sup>**  
**@ 1:00 PM—Laurel Gorge**  
**Cultural Heritage Center**

- \* Camila Haney will lead us on a spring wildflower hike.
- \*Creekside & Middle Trails
- \*Distance: ~ 2 miles
- \*Meet inside the center.

COST: \$8 - PREREGISTER BY APRIL 24TH

## FLORAL CARE & ARRANGING WORKSHOP


Learn tips to keep flowers fresh longer.



Make a sundae arrangement for Mother's Day!

MAY 11TH @ NOON


CARTER COUNTY  
EXTENSION OFFICE



University of Kentucky  
College of Agriculture,  
Food and Environment  
Cooperative Extension Service

Cooperative Extension Service  
Agriculture and Natural Resources  
Family and Consumer Sciences  
4-H Youth Development  
Community and Economic Development

Educational programs of Kentucky Cooperative Extension serve all people regardless of race, color, age, sex, religion, disability, or national origin. University of Kentucky, Kentucky State University, U.S. Department of Agriculture, and Kentucky Counties, Cooperating.  
LEXINGTON, KY 40546



Disabilities accommodated with your notification.



## APRIL CLASSES

Wednesdays  
12:30 p.m. ET/ 11:30 a.m. CT

---

**April 5**  
**SAY WHAT? Seed packet terminology**

**April 12**  
**Tulips**

**April 19**  
**Early Season Apple Care**

**April 26**  
**TBD**



---

Register Here:  
<https://tinyurl.com/23AprHww>

# NEALA Group Mineral & Twine Order

The Northeast Area Livestock Association is currently taking orders for summer and fall livestock minerals and twine. Kee's Farm Service won the bid and two of the minerals are a special blend to meet the UK Beef IRM guidelines. (The mineral with IGR is not an IRM blend.) Orders must be placed by April 20<sup>th</sup> by calling the Extension Office at 474-6686. Minerals and twine may be picked up at Kee's Farm Service on or after May 5<sup>th</sup>.

Available minerals:

*A Complete Basic Cow-Calf Mineral @ \$20.00/ 50lb bag*

*A Complete Basic Cow-Calf Mineral with High Magnesium @ \$24.00/ 50lb bag*

*Basic Mineral with IGR Fly Control (Not a UK IRM Mineral) @ \$23.00/ 50lb bag*

Four types of hay twine are available:

*16,000 ft sisal (38# rolls) @ \$49.00*

*9,000 ft sisal @ \$49.00*

*20,000 ft plastic (available in orange & blue) @ \$28.00*

*9,000 ft plastic (available in orange & blue) @ \$30.00*

**Orders for minerals and twine must be placed by April 20<sup>th</sup> by calling the Extension Office at 474-6686.**

## *Which Mineral Do I Feed When?*

### Spring Calving Herds

January — Mid-May: High Magnesium Mineral

Supplement with high magnesium mineral at least 30 days prior to calving. Cows need 20 grams of magnesium daily or 4 oz/day of a 15% magnesium mineral mix. Continue providing magnesium in the mineral mix until daytime temperatures are consistently above 60° F.

Mid-May – December: Basic/Cow Calf Mineral

Provide a free-choice mineral mix containing adequate levels of phosphorus, vitamin A, selenium, copper, zinc and other trace minerals at all times.

### Fall Calving Herds

August – October: High Magnesium Mineral

Supplement with high magnesium. If the temperature is unseasonably warm, continue using a high magnesium mineral through November.

November – July: Basic/Cow Calf Mineral

Provide a free-choice mineral mix containing adequate levels of phosphorus, vitamin A, selenium, copper, zinc and other trace minerals at all times.

## Weeds of the Month

Weeds to Target in April: Dandelion, Dock, Wild Garlic, Poison Hemlock, Multiflora Rose, Plantain

See AGR-207 in January's newsletter on online at [tinyurl.com/5uusk6np](https://tinyurl.com/5uusk6np) for recommended chemical and mowing options for these weeds.

## Stay in the know



<https://carter.ca.uky.edu/anr>

Our redesigned website includes upcoming events, past newsletters, newspaper articles, and information about our ag organizations.



@CarterCoKYAg



@CarterCoKYAg

Strawberry, Raspberry & Blackberry plants are scheduled to arrive the week of April 3<sup>rd</sup>. We will call to let you know when they are ready to be picked up.



## Carter County Soil Conservation News

### 2023 Annual Tree Giveaway

The Carter County Soil Conservation District will be hosting their Annual Tree Giveaway on Friday, April 21st, 2023 at 8:00 AM. Trees will be given out on a "First Come, First Served Basis". Individuals will be given 10 seedlings of their choice.

Location: Carter County Cooperative Extension Office  
Farmers Marker Shed

#### Seedlings Available:

Cypress  
Chinese Chestnut  
Kentucky Coffee Tree  
Persimmon  
Willow Oak  
Red Shumard Oak  
White Pine

In accordance with Federal civil rights law and U.S. Department of Agriculture (USDA) civil rights regulations and policies, the USDA, its Agencies, offices, and employees, and institutions participating in or administering USDA programs are prohibited from discriminating based on race, color, national origin, religion, sex, gender identity (including gender expression), sexual orientation, disability, age, marital status, family/household status, income derived from a public assistance program, political beliefs, or reprisal or retaliation for prior civil rights activity in any program or activity conducted or funded by USDA (not all bases apply to all programs). Remedies and complaint filing deadlines vary by program or incident.

Persons with disabilities who require alternative means of communication (e.g., Braille, large print, accessible format, American Sign Language, etc.) should contact the responsible Agency or USDA's TARGET Center at (202) 720-2420 (voice and TDD) or contact USDA through the Federal Relay Service at (800) 877-8339. Additionally, program information may be made available in languages other than English.

To file a program discrimination complaint, complete the USDA Program Discrimination Complaint Form (AD-302), found under the title of How to File a Program Discrimination Complaint and at any USDA office or write a letter addressed to USDA and provide the information requested on the form. To request a copy of the complaint form, call (866) 632-9892. Submit your completed form or letter to USDA by (1) mail, U.S. Department of Agriculture, Office of the Assistant Secretary for Civil Rights, 1400 Independence Avenue, SW, Washington, DC 20250-9410; (2) fax, (202) 696-7442; or (3) email, [program.intake@usda.gov](mailto:program.intake@usda.gov).

USDA is an equal opportunity provider, employer, and lender.

### 2023 CHEMICAL COST SHARE

The Carter County Soil Conservation District will be providing a 50/50 cost share for our Noxious Weed Program. We will allow any Carter County Resident with a Carter County Farm Number to purchase their chemicals for reimbursement up to \$80 per farm number.

You must provide proof of purchase such as receipt and copy of cancelled check or receipt showing a credit or debit card was used. No purchases before the 15th of March will be allowed for reimbursement. No cash purchases will be allowed.

These reimbursements will be made once a month to those who participate until funding is suppressed.

Please submit receipts to Shelby Oakley at the Carter County Soil Conservation District at 526 East Main Street Grayson, KY 41143.

If you have any questions, please call at 606-474-5184 opt. 3 or 606-939-2824.

# Don't Get Burned by Fire Blight

Kim Leonberger, Plant Pathology Extension Associate, and Nicole Gauthier, Plant Pathology Extension Specialist; Photos: Nicole Gauthier

Fire blight is an important disease of apple, crabapple, pear, and flowering pear in Kentucky. Symptoms are often not observed until late spring or early summer; however, initial infections occur at bloom. The pathogen survives winter in dead, dying, and diseased wood and in cankers. Removal of these pathogen sources can reduce spread of fire blight and should be completed in late winter while the pathogen is dormant.

## Fire Blight Facts

- ⇒ Early symptoms include wilt of flower cluster and blossom death (Figure 1). Disease spreads to shoots or branches where tips wilt and rapidly die (blight) to form a characteristic 'shepherd's crook' (Figure 2). Dark brown, sunken cankers (stem lesions) develop and expand to girdle branches, resulting in branch death (Figure 3).
- ⇒ Potential hosts include apples, pears, and several landscape woody ornamentals in the rose family.
- ⇒ Primary infection occurs at bloom and may continue through petal fall or until shoot elongation ends.
- ⇒ Rainy conditions, periods of high humidity, and temperatures between 65°F and 70°F favor disease development.
- ⇒ Caused by the bacterium *Erwinia amylovora*.
- ⇒ Bacterial cells overwinter in dead, dying, and diseased wood.

## Management Options

- ⇒ Select varieties that are tolerant or resistant to fire blight.
- ⇒ Maintain plant health with proper nutrition and irrigation practices.
- ⇒ Prune to increase air flow through the plant canopy.
- ⇒ Remove infected plant tissues during winter when plants and pathogens are dormant. Do not prune when trees are wet. Burn, bury, or otherwise dispose of diseased material.
- ⇒ Bactericides should be applied preventatively. Once infection occurs, sprays are not effective. Homeowners can apply copper during dormancy to reduce overwintering inoculum. Additional bactericides available for commercial growers are presented in the Commercial Fruit Pest Management Guide (ID-232). Always follow label directions when utilizing bactericides.
- ⇒ Fire blight risk throughout the season can be determined by the disease development models available through the UK Ag Weather Center website.

Contact the Extension Office for additional information including Fruit, Orchard, and Vineyard Sanitation, Backyard Apple Disease Management Using Cultural Practices (with Low Spray, No Spray & Organic Options), Simplified Backyard Apple Spray Guides, Disease and Insect Control Programs for Homegrown Fruit in Kentucky including Organic Alternatives & Commercial Midwest Fruit Pest Management Guide.

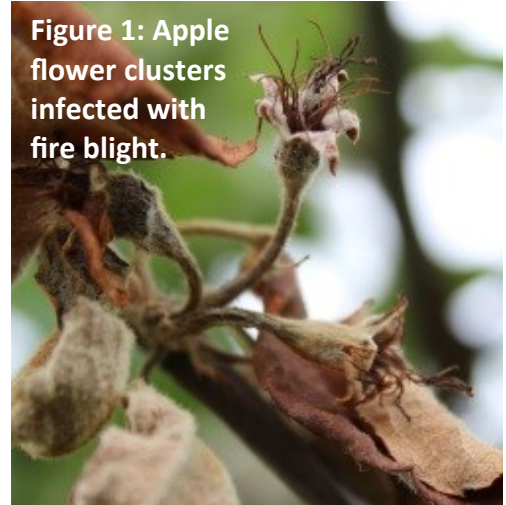


Figure 1: Apple flower clusters infected with fire blight.

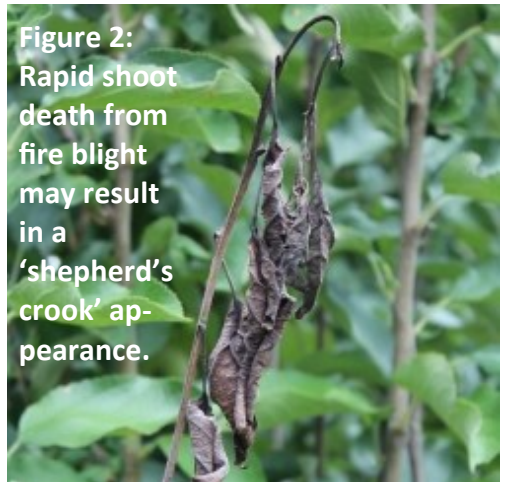


Figure 2: Rapid shoot death from fire blight may result in a 'shepherd's crook' appearance.

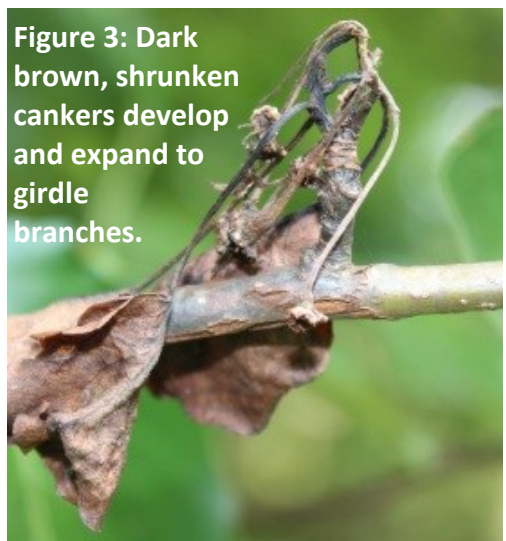


Figure 3: Dark brown, shrunken cankers develop and expand to girdle branches.

## KENTUCKY SELLING FARMER TAX CREDIT

### KENTUCKY SELLING FARMER TAX CREDIT ENCOURAGES CONTINUED USE OF AGRICULTURAL LAND FOR FARMING

The Kentucky Selling Farmer Tax Credit program grants tax credits to selling farmers who agree to sell agricultural land and assets to beginning farmers.

Farmers wanting to sell agricultural land and assets may be eligible for a Kentucky income tax credit up to 5% of the purchase price of qualifying agricultural assets, subject to a \$25,000 calendar year cap and a \$100,000 lifetime cap.

- A beginning farmer cannot have previously owned any agricultural land for a period exceeding 10 years.
- Selling farmers cannot have more than 50 full-time employees and must be the legal owner of agricultural land and assets sold to a beginning farmer.
- Sales involving immediate family members do not qualify for tax credit consideration.

Prior to completing a sale of agricultural assets, applicants should review the Kentucky Selling Farmer Tax Credit Guidelines for more detailed program information and eligibility requirements.

#### HOW DO I APPLY?

Visit [ced.ky.gov/ksftc](https://ced.ky.gov/ksftc) for complete details. For more information or other assistance for small businesses in Kentucky, please visit [ced.ky.gov/entrepreneurship](https://ced.ky.gov/entrepreneurship) email [cedbsd@ky.gov](mailto:cedbsd@ky.gov) or call 800-626-2930.



UP TO  
**\$25K**  
IN TAX CREDITS  
PER CALENDAR  
YEAR

**TEAM KENTUCKY**  
CABINET FOR ECONOMIC DEVELOPMENT

The Cabinet's services, assistance, and activities are available to all without regard to race, color, gender or national origin.



## Farmer Scholarships to attend the International Grassland Congress

The International Grassland Congress will be held in Covington, Kentucky from May 14-19, 2023. This is the first time this international conference will be hosted in the US since 1981. Funding is available to help cover your expenses to attend this conference. The registration cost is \$600 for the entire time or \$200 per day. The National Cattleman's Beef Association offers scholarships to producers through the Rancher Resiliency Grant program. You can apply and should be approved to receive up to \$1,622 to cover/reimburse your expenses related to attending the event. Here is the link with details to the grant information: <https://www.ncba.org/producers/rancher-resilience-grant>. The link to the International Grassland Congress is [www.internationalgrasslands.org/2023-igc/](https://www.internationalgrasslands.org/2023-igc/). Strongly consider attending this international conference!



## Transportation Crews to Soon Treat State Roadside for Noxious Weeds

*Controlling noxious weeds, invasive plants improves roadway visibility, protects infrastructure*

FRANKFORT, Ky. (March 9, 2023) – The Kentucky Transportation Cabinet (KYTC) crews will soon begin treating noxious and nuisance weeds throughout the state to improve driver safety and support efficient maintenance operations by limiting their presence. Property owners who are actively treating noxious weeds on private property may request highway crews to treat select nuisance weeds found on adjacent state-owned right of way.

The Cabinet targets 12 noxious weeds in accordance with KRS 176.051 and 603 KAR 3:100: Amur Honeysuckle (*Lonicera maackii*), Canada Thistle (*Cirsium arvense*), Common Teasel (*Dipsacus fullonum*), Cutleaf Teasel (*Dipsacus laciniatus*), Japanese Knotweed (*Polygonum cuspidatum*), Johnsongrass (*Sorghum halepense*), Kudzu (*Pueraria montana*), Marestalk (*Conyza canadensis*), Multiflora Rose (*Rosa multiflora*), Nodding Thistle (*Carduus nutans*), Poison Hemlock (*Conium maculatum*), Spotted Knapweed (*Centaurea stoebe*).

"If left untreated, some weeds can grow several feet tall and impact driver visibility," said KYTC Secretary Jim Gray. "Actively treating the weeds on state-maintained property enhances safety, prevents damage to ditches and drains and minimizes the presence of plants that attract deer near highways."

Noxious weeds often invade and destroy the roadside turf grass, leaving these areas vulnerable to erosion. They can also smother native plants through rapid reproduction and long-term persistence.

Kentuckians who want to request weed treatment must submit a written application to their local KYTC highway district office. To request an application, please contact the appropriate district highway office. Contact information may be found on the district webpages at <https://transportation.ky.gov/DistrictPages/Pages/default.aspx>.



PRESORTED  
 STANDARD  
 US POSTAGE PAID  
 GRAYSON, KY  
 PERMIT #94

Carter County  
 94 Fairground Drive  
 Grayson, KY 41143

RETURN SERVICE REQUESTED

## APRIL 2023

# CARTER COUNTY AGRICULTURE & NATURAL RESOURCES NEWSLETTER

### WHAT'S INSIDE:

Upcoming Events	Pg 1
NEALA Cattle Meeting	Pg 2
Beekeepers Meeting	Pg 2
Regional Farmer's Market Meeting	Pg 2
From the Woods Today	Pg 2
Horticulture Webinars	Pg 3
Hike & Learn	Pg 3
Floral Care & Arranging Workshop	Pg 3
Mineral & Twine Group Order	Pg 4
Weeds of the Month	Pg 5
Soil Conservation News	Pg 5
Fire Blight	Pg 6
KY Selling Farmer Tax Credit	Pg 7
Roadside Noxious Weeds	Pg 7
International Grassland Conference	Pg 7

